



4 Riverlight Quay, London
SW11

GARTON JONES.COM

4 Riverlight Quay, London , SW11

£875 Per Week

A fantastic 2-bedroom apartment of approx. 765sq.ft (71sq.m) available to rent in Riverlight Quay, one of Nine Elms most popular residential developments, located on the bank of the River Thames. This furnished property has an open plan reception room with a smart integrated kitchen, wood flooring with underfloor heating, comfort cooling, 2 luxury bathrooms (1 en-suite) and 2 balconies.

Residents of Riverlight Quay have the use of a 24-hour concierge, a residents health spa with a well-equipped “river view” gymnasium, a heated swimming pool with steam room, sauna, and a Jacuzzi, as well as a cinema screening room and virtual golf facility. The on-site amenities include the Black Cab Coffee Co, Nine Elms Tavern, and Sainsbury’s. There is also a Waitrose supermarket at Embassy Gardens, opposite, and you will also be within easy reach of other local shops and restaurants forming the Nine Elms regeneration with both Nine Elms & Battersea Power Station Tube Stations on your doorstep.

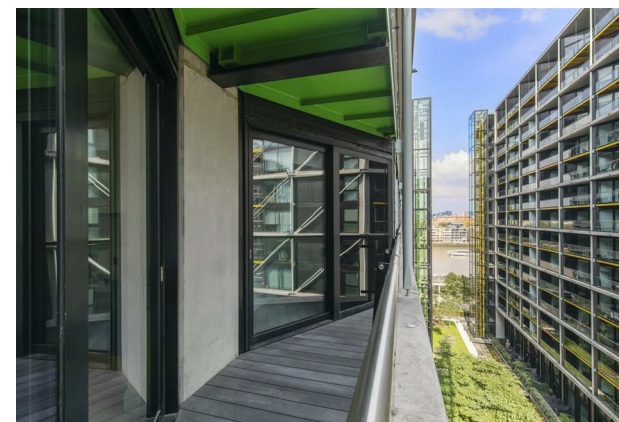
Please note furniture may differ to that shown in the current photos.

- 2 Bedrooms
- 765sq.ft (71sq.m)
- 2 Bathrooms (1 En-Suite)
- Parking Available via Separate Agreement
- Open Plan Reception
- 2 Balconies
- 24 Hour Concierge
- Residents Gym
- Swimming Pool & Spa Facilities
- 0.2 Miles to Battersea Power Station Tube

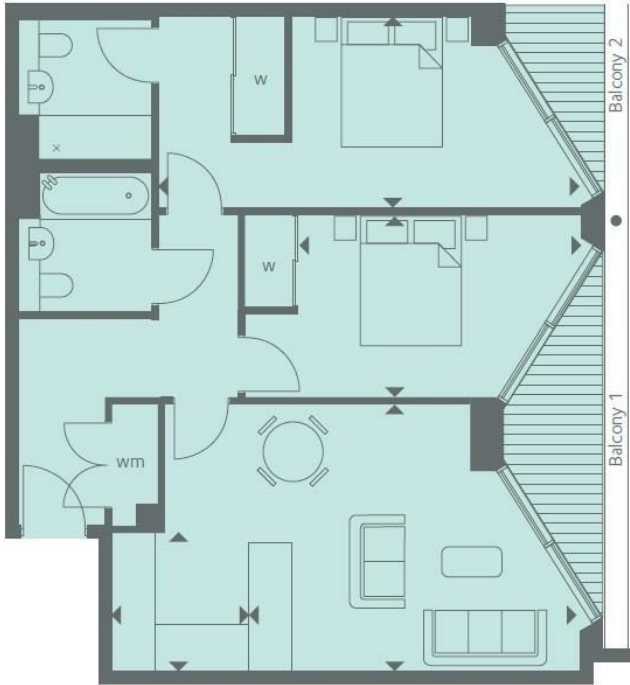
GARTON JONES.COM

9 Albert
Embankment
London
SE1 7SP

Lettings:
+44 (0) 20 7735 1888
nineelms@gartonjones.com
www.gartonjones.com



Thames River



LEVEL	7
INTERNAL AREA M ² / SQ FT	71.09 / 765
EXTERNAL AREA M ² / SQ FT	7.26 / 78.1
Living / Dining	5.02m x 3.96m / 16'5" x 13'0"
Kitchen	2.06m x 1.65m / 6'8" x 5'4"
Bedroom 1	6.32m x 2.89m / 20'7" x 9'5"
Bedroom 2	4.13m x 2.75m / 13'5" x 9'0"
Balcony 1	5.28 x 1.49m / 17'3" x 4'9"
Balcony 2	2.64 x 1.49m / 8'7" x 4'9"

